

Measures AC current passing through the center

Electrical Specifications

- Output 0.333 V at rated current
- Accuracy $\pm 1\%$
- Phase angle < 2 degrees (valid for 70A or higher)
- Rated accuracy at 10% to 130% of rated current

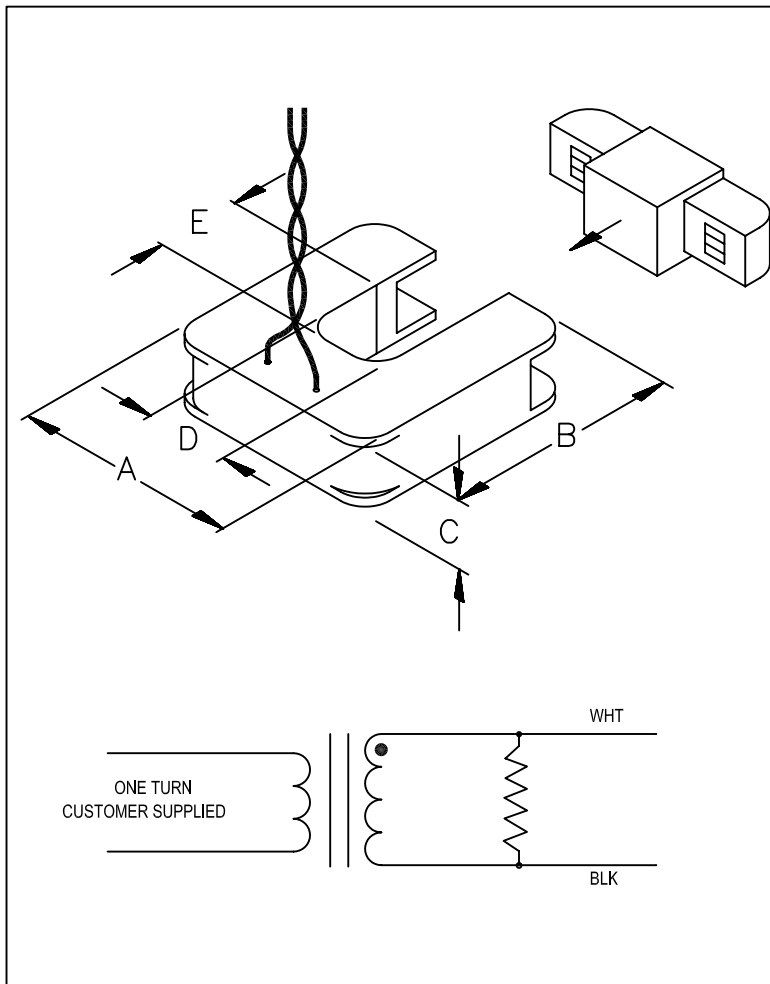
Mechanical Specifications

- Epoxy encapsulated housing.
- Leads-8ft. twisted pair, 22 AWG

Features

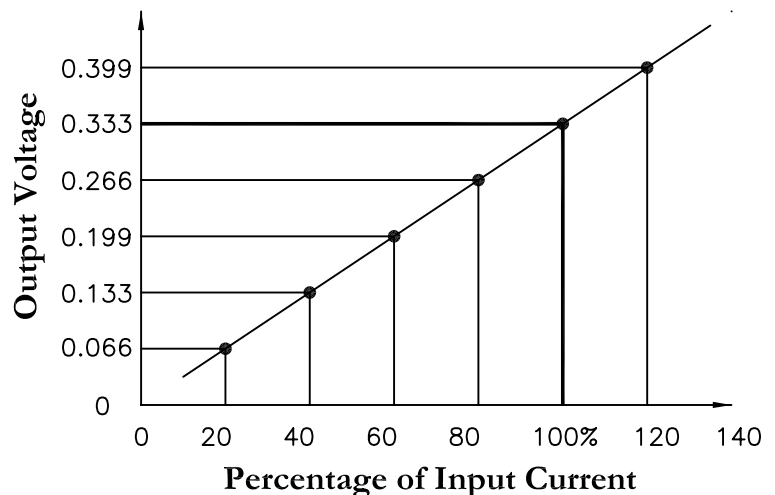
- UL recognized
- Precision burden resistor
- Other ratings and specifications are available

0.75 Inch Opening Current Transformer



MAGNELAB P/N	RATED CURRENT (Amps)	DIMENSIONS (INCHES)				
		A	B	C	D	E
SCT-0750-000	0-200*	2.00	2.10	0.61	0.75	0.75
SCT-0750-005	5					
SCT-0750-010	10					
SCT-0750-015	15					
SCT-0750-020	20					
SCT-0750-025	25					
SCT-0750-030	30					
SCT-0750-050	50					
SCT-0750-060	60					
SCT-0750-070	70					
SCT-0750-100	100					
SCT-0750-150	150					
SCT-0750-200	200					

* Products with -000 have no burden resistor, and the output voltage is clamped to 22 Volts.



Phone: (303) 772-9100

Fax: (303) 772-9400

E-Mail: info@magnelab.com

Web Site: www.magnelab.com



MAGNELAB
INCORPORATION
LONGMONT, COLORADO 80501